

The backup strategy of pCon.planner (2019-06-13)

Product type: pCon.planner 8.1 update 2

Content

1	The backup strategy of pCon.planner	1
1.1	Automatically save backup file	1
1.2	Create a backup manually	2
1.3	Use common folder for backups	2

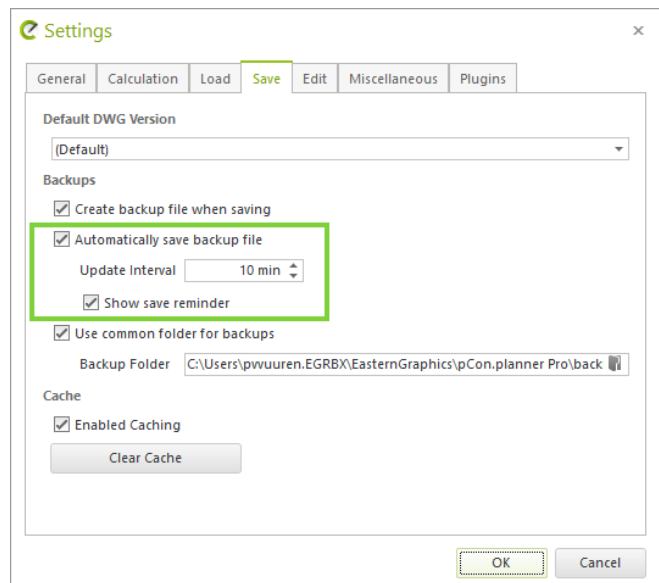
1 The backup strategy of pCon.planner

In the following section you will find a description of the backup strategy of pCon.planner. The following methods can help you to prevent file loss.

1.1 Automatically save backup file

Writing the backup takes place on an adjustable time interval. This may be disabled. A time interval is an effective change of the interval between the drawing and the first time it attempts to back up. The backup will be saved in the same folder as the original file. The backup file has the same extension (*.dwg) and the file name will end with a (~). This file can be used to restore the drawing in case of an error or crash of the program.

In order not to disturb user activities, the backup will only be written if no tools are running, or if a modal dialog box is open.



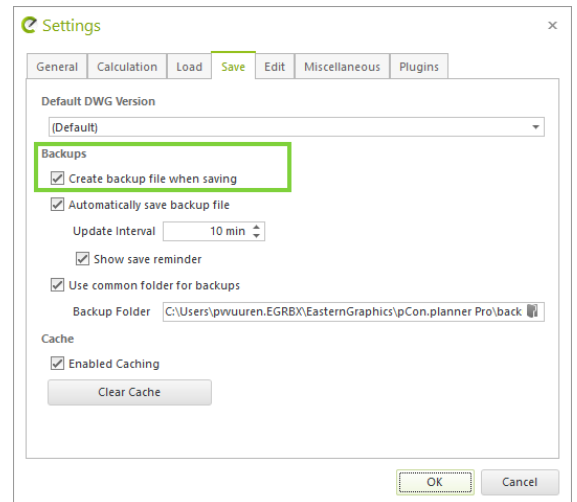
Modal dialog box: a dialog box that requires the user to take some action before they can switch to a different dialog box. For example error messages or errors

Creating a backup will only work if the drawing is already connected to a file name. The drawing must be opened or previously saved. A new backup is first written to a temporary file name (extension ".temp"). The backup file will only be replaced if the writing of the temporary file was successful.

1.2 Create a backup manually

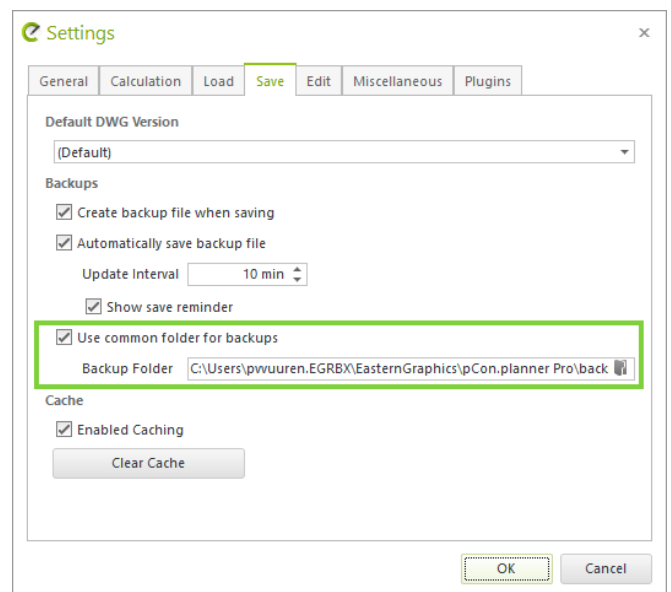
When manually saving a drawing the backup file will be replaced by the file that is currently opened and saved. Thereafter, the current file will be rewritten. Disabling this feature is strongly discouraged. After saving the reliability of the written file will be checked, even if no error was found. In case of detecting a damaged drawing there will appear a message that leads the user to the backup file (Please note that this integrity check is limited).

Please note: When you create a copy manually this will always replaces the automatic backup (that has been created safely)! Therefore, first check if there is a less recent backup, before you manually save a drawing.



1.3 Use common folder for backups

Select *Use common folder for backups* in order to save the backup files in a separate folder. For example, if you want to store files on the server we recommend to also save the backup locally. In this way, you'll always have a backup if there are problems with the connection to the server.



Legal remarks

© 2019 EasternGraphics GmbH | Albert-Einstein-Straße 1 | 98693 Ilmenau | GERMANY

This work (whether as text, file, book or in other form) is copyright. All rights are reserved by EasternGraphics GmbH. Translation, reproduction or distribution of the whole or parts thereof is permitted only with the prior agreement in writing of EasternGraphics GmbH.

EasternGraphics GmbH accepts no liability for the completeness, freedom from errors, topicality or continuity of this work or for its suitability to the intended purposes of the user. All liability except in the case of malicious intent, gross negligence or harm to life and limb is excluded.

All names or descriptions contained in this work may be the trademarks of the relevant copyright owner and as such legally protected. The fact that such trademarks appear in this work entitles no-one to assume that they are for the free use of all and sundry.